

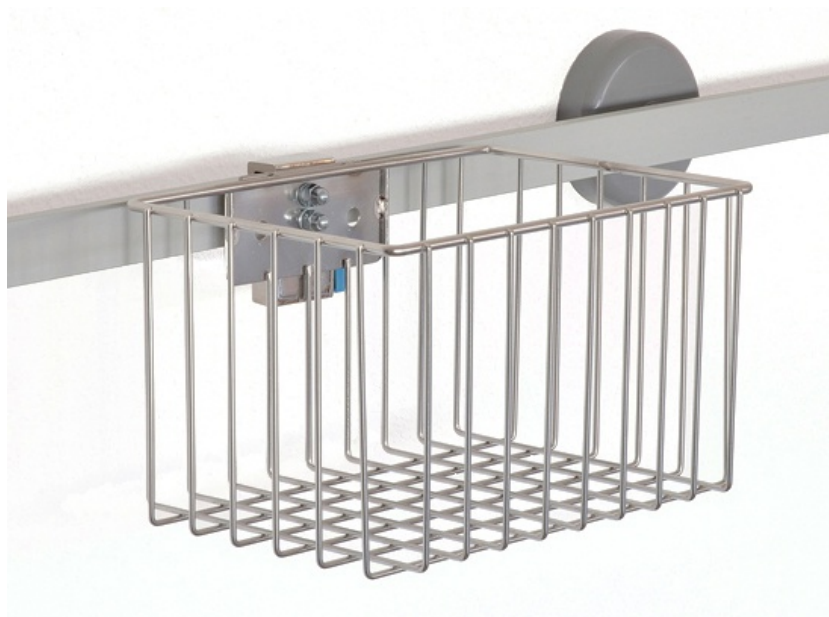


Accessories

Baskets

Practical attachable basket coated in white, able to contain sleeves for blood pressure devices or any other accessory of similar dimensions and weight.

- Rail version with a pushbutton clamp and a Ø38 mm bar version with a quick flange.



TECHNICAL SPECIFICATIONS

Materials:	Stainless steel wire.
Dimensions:	250 x 180 x 150 mm